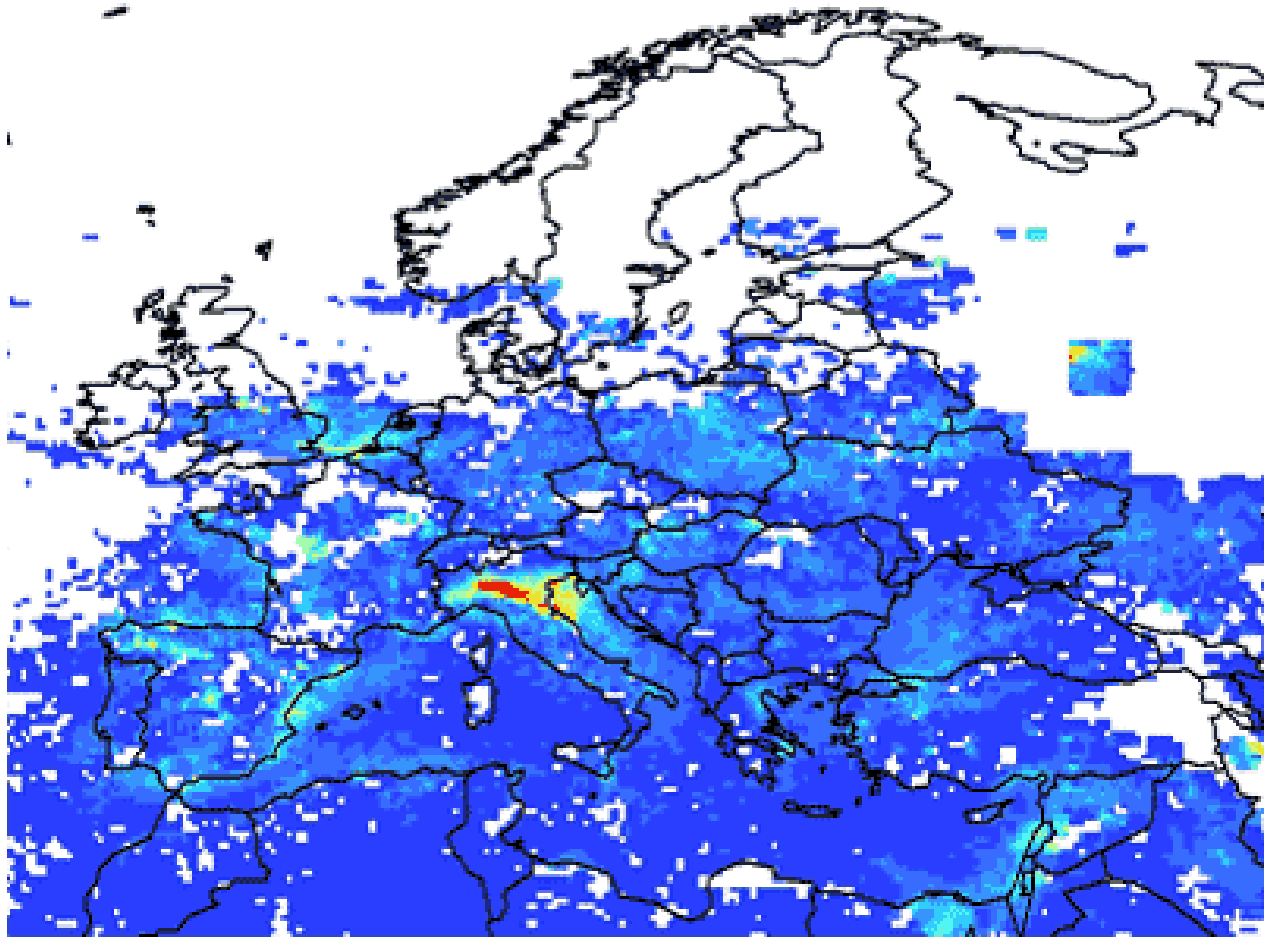
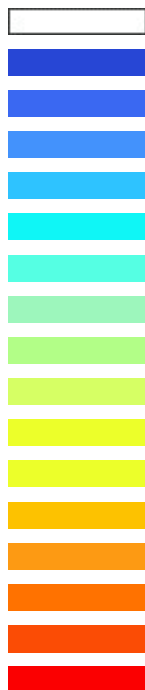


## Concentrazioni di biossido di azoto rilevate dal satellite sull'Europa

GENNAIO 2007



Legenda



$10^{13}$  molecole di  $\text{NO}_2/\text{cm}^2$

n.d.  
0 - 200  
200 - 400  
400 - 600  
600 - 800  
800 - 1000  
1000 - 1200  
1200 - 1400  
1400 - 1600  
1600 - 1800  
1800 - 2000  
2000 - 2200  
2200 - 2400  
2400 - 2600  
2600 - 2800  
2800 - 3000  
> 3000